

Infectious Syphilis in South East Queensland

Dr Mandy Seel

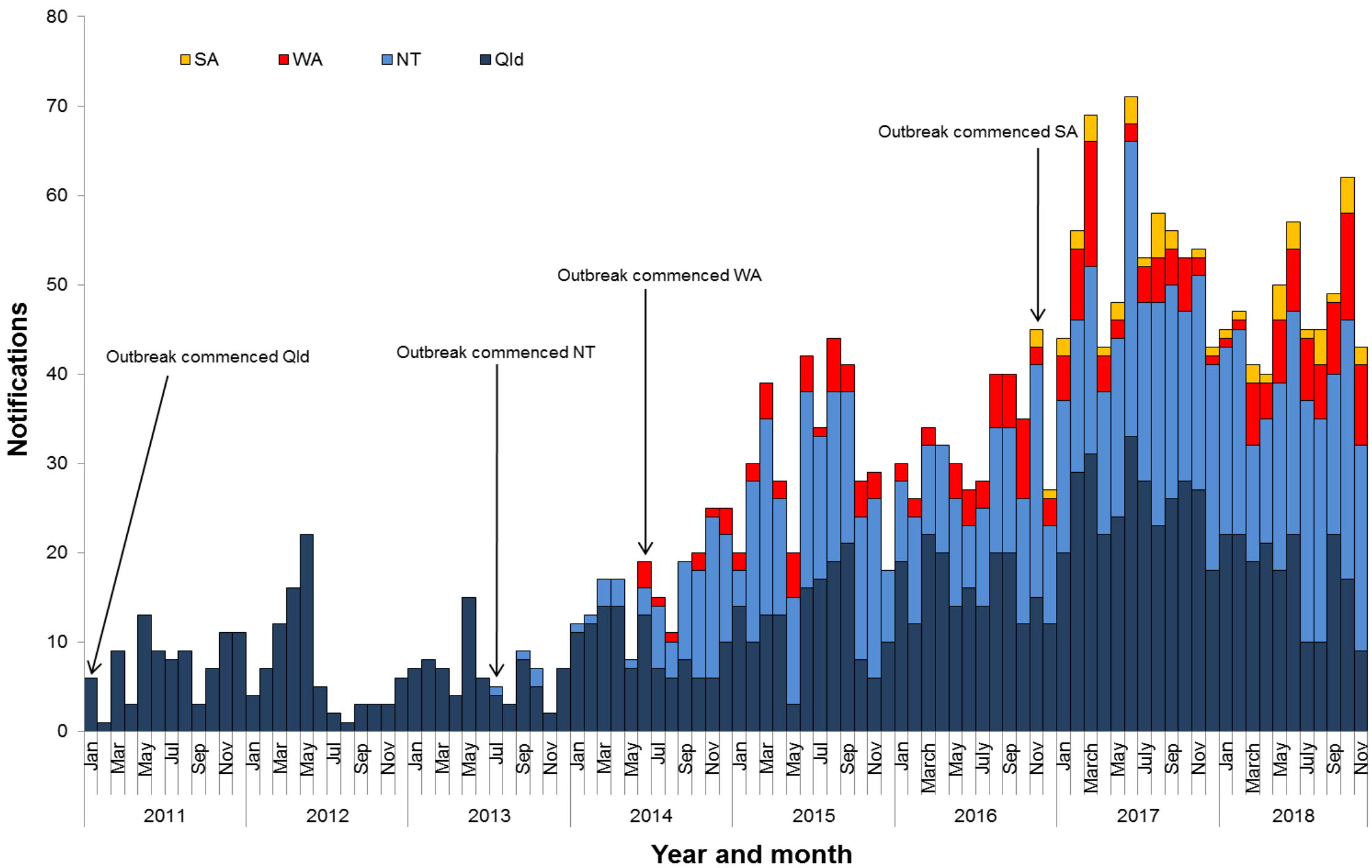
Metro North Public Health Unit

Queensland Health

Aug 2019

Contents

- Epidemiology
- Risk factors
- Syphilis in Pregnancy – Clinical Guidelines for Qld
- Questions



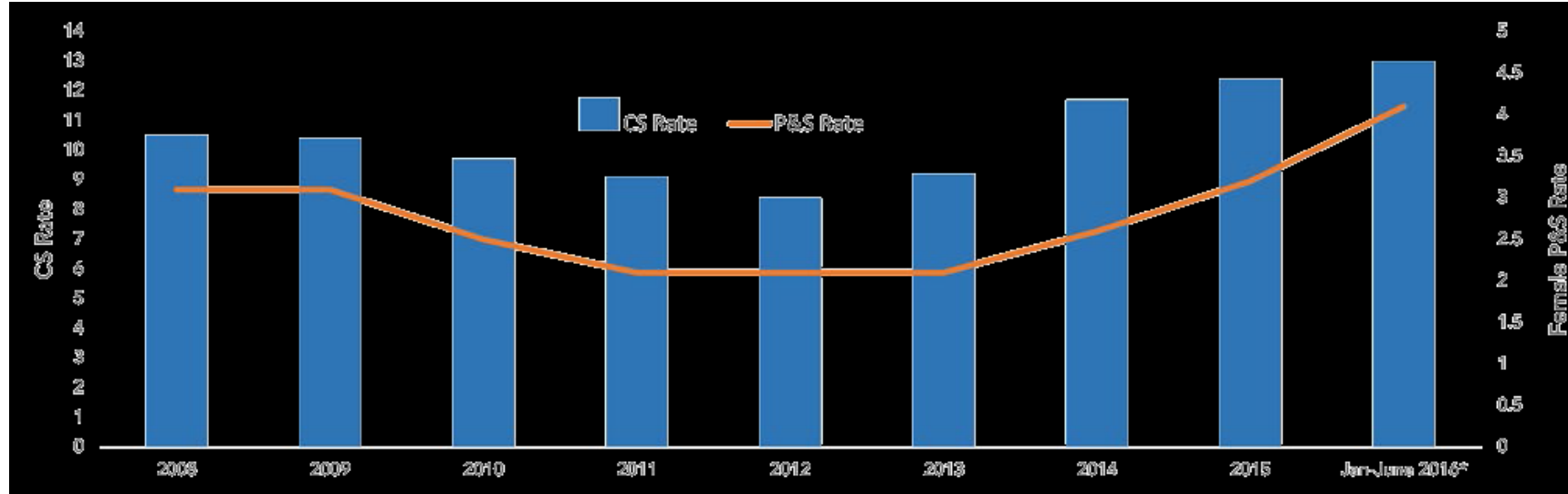
Infectious syphilis in Queensland last 5 years

2014	2015	2016	2017	2018
395	572	682	1083	1127

SEQ perspective

- For each case notified in North Qld there are two cases notified in Southern Qld
- Movement in demographics in people affected between 2015 and 2019
- Cases of congenital syphilis

Rate of infectious syphilis in women 15-44 years and Congenital syphilis USA



Congenital syphilis notified in Australia

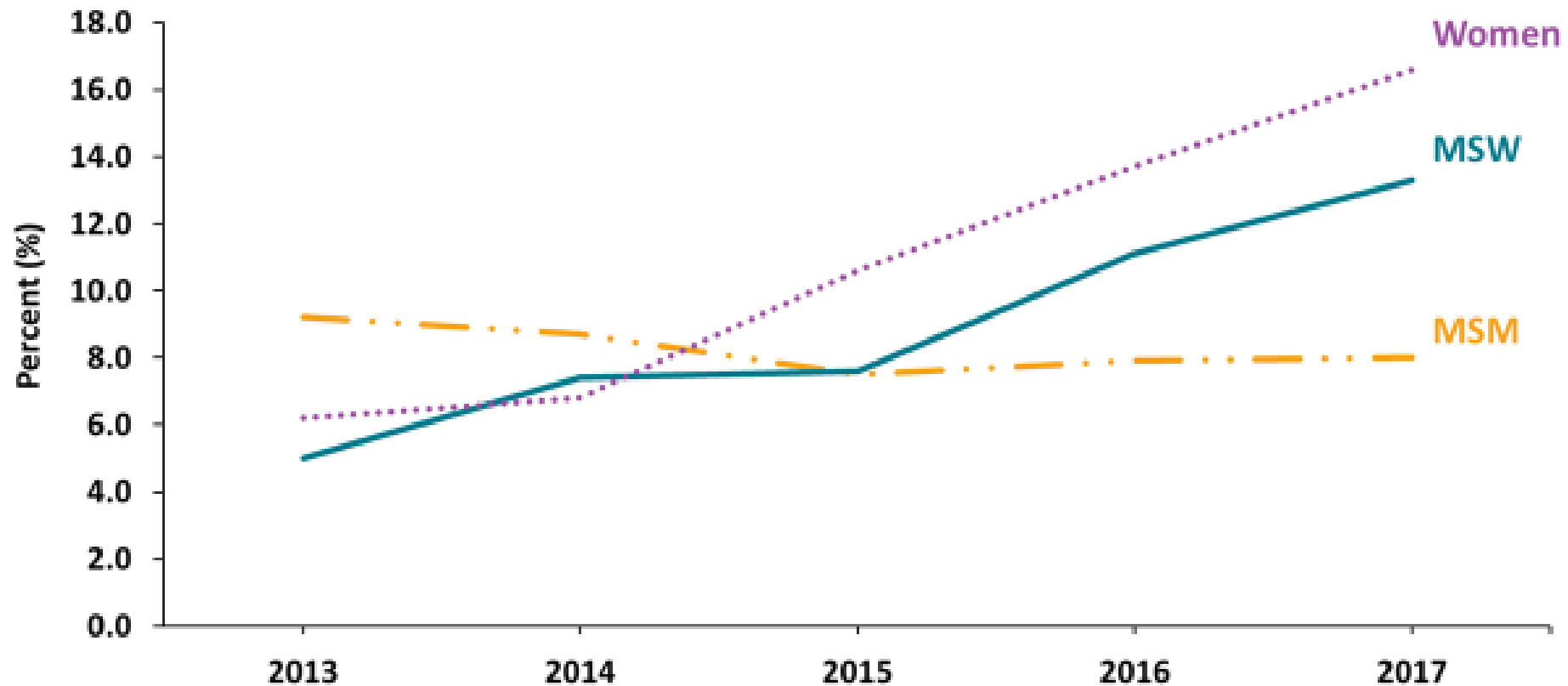
(NNDSS)

	ACT	NSW	NT	QLD	SA	TAS	VIC	WA	Australia
2009	0	0	4	0	0	0	0	0	4
2010	0	0	1	2	0	0	0	1	4
2011	0	3	0	3	0	0	0	0	6
2012	0	0	0	0	0	0	0	0	0
2013	0	2	1	2	0	0	0	2	7
2014	0	0	3	0	0	0	0	0	3
2015	0	0	0	3	0	1	0	0	4
2016	0	0	0	2	0	0	0	0	2
2017	0	1	1	3	1	0	2	0	8
2018	0	1	1	3	0	0	2	1	8

Risk factors and other considerations

- Very little relevant international literature
- Recent US study provides support for local theories
- Pattern of :
 - Young/teen pregnancy
 - Drug and alcohol use esp ICE
 - Poverty/homelessness
 - Mental ill health
- Not associated with MSM
- Not migrant or Indigenous
- Social isolation/marginalisation
- Pregnancy with multiple risk factors
- Difficulty accessing health services and sustaining access = fragmented care
- Need a customised model of care

Reported Methamphetamine Use* Among Reported Primary and Secondary Syphilis Cases by Sex and Sexual Behavior, United States, 2013–2017



* Proportion reporting methamphetamine use within the last 12 months calculated among cases with known data (cases with missing or unknown responses were excluded from the denominator).

Abbreviations: MSM = gay, bisexual, or other men who have sex with men; MSW = men who have sex with women only.



Responses

- STI action plan – north Qld. Not Southern Qld
- Syphilis health promotion
- Syphilis in pregnancy clinical guidelines plus educational and audit tools
- Morbidity and mortality audit – Queensland Maternal and Perinatal Quality Council subcommittee reviews all cases of CS
- Additional staff member QSSS (Metro North Public Health Unit)
- Working with labs to address quality and advice issues
- Meeting to discuss maternity services and sexual health

Syphilis in pregnancy

Clinical Guideline Presentation v1.0

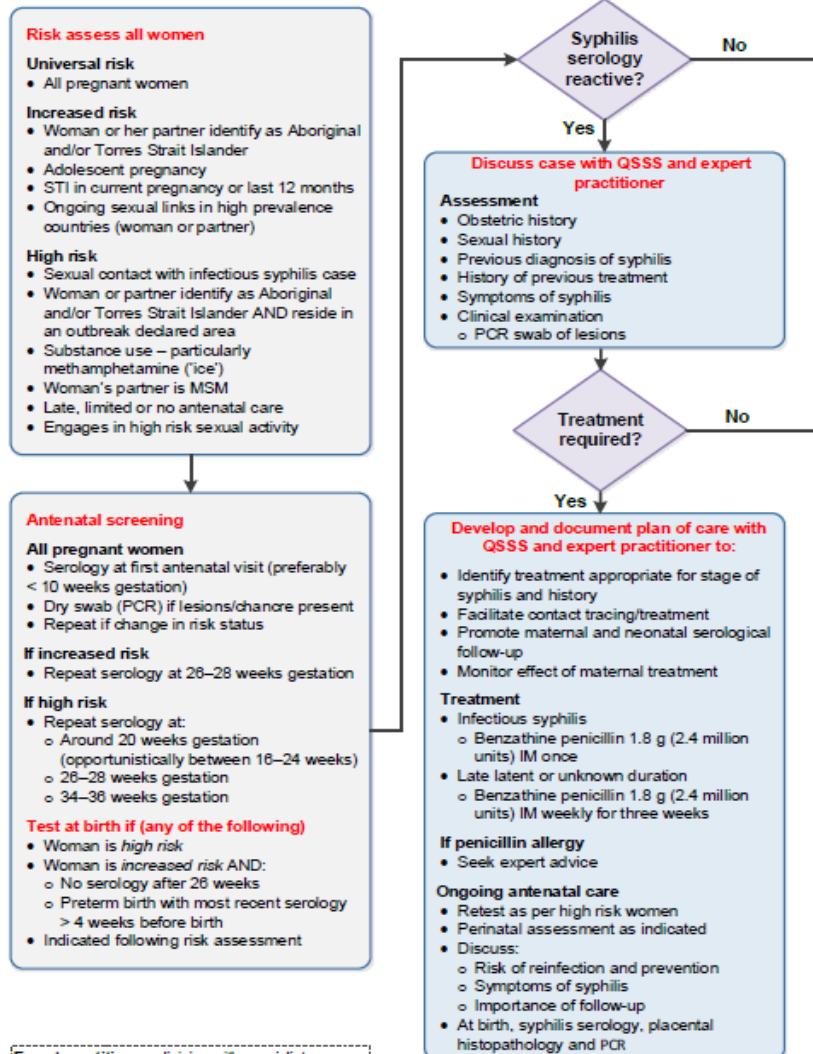


45 minutes

Towards CPD Hours

Queensland Clinical Guideline: Syphilis in pregnancy

Flow Chart: Antenatal care



Expert practitioner: clinician with specialist knowledge and experience in the testing, result interpretation, management and treatment of syphilis

Comment

Fill & Sign

Questions